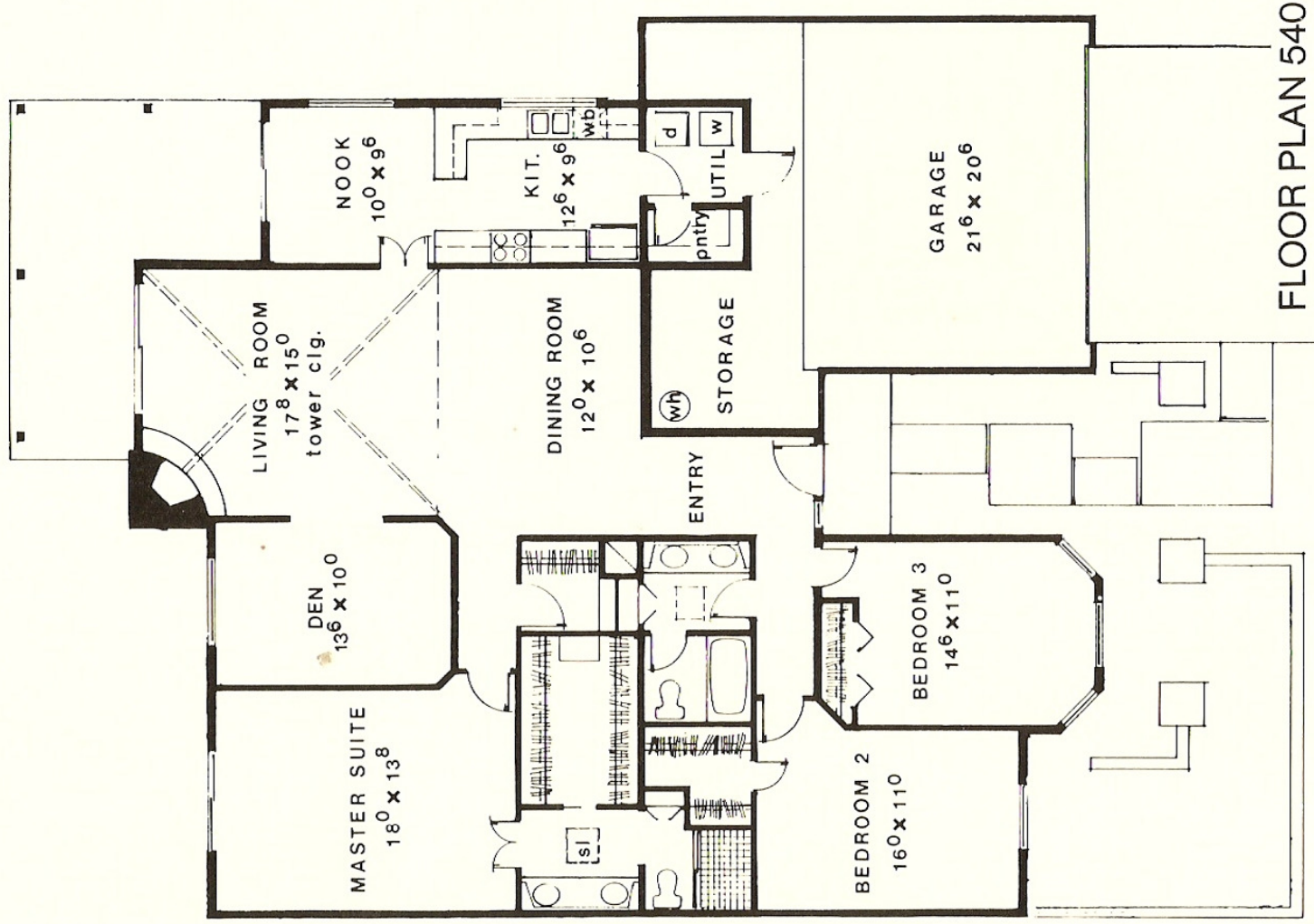


La Estancia



FLOOR PLAN 540

As you arrive in the entryway, you'll find yourself in the middle of a captivating expanse of space that reaches the length of the home. In a cozy corner at the far end, a toasty-warm fireplace draws visitors closer.

An ingeniously situated den or third bedroom is the next thing you'll notice about La Estancia. Large bay windows face out from the room onto the landscaped courtyard, while inside, the windows form a warmly lit sitting area.

When you approach the living room, you'll be surprised by the large dining area that appears around the corner. Another few steps and you'll see a comfortable den adjoining the living room.

Now enter the short hall and pass through the double doors to the awaiting master suite. Notice how it is isolated from the other two bedrooms, providing welcome privacy to a homeowner with teenagers or visiting guests.

If you prefer, a few changes in the floorplan can include the den as part of the master bedroom suite, giving you an enormous amount of space in which to enjoy your leisure hours.

For the avid cook, there's a roomy kitchen with plenty of counter space, as well as an airy breakfast nook in which to serve your favorite dishes.