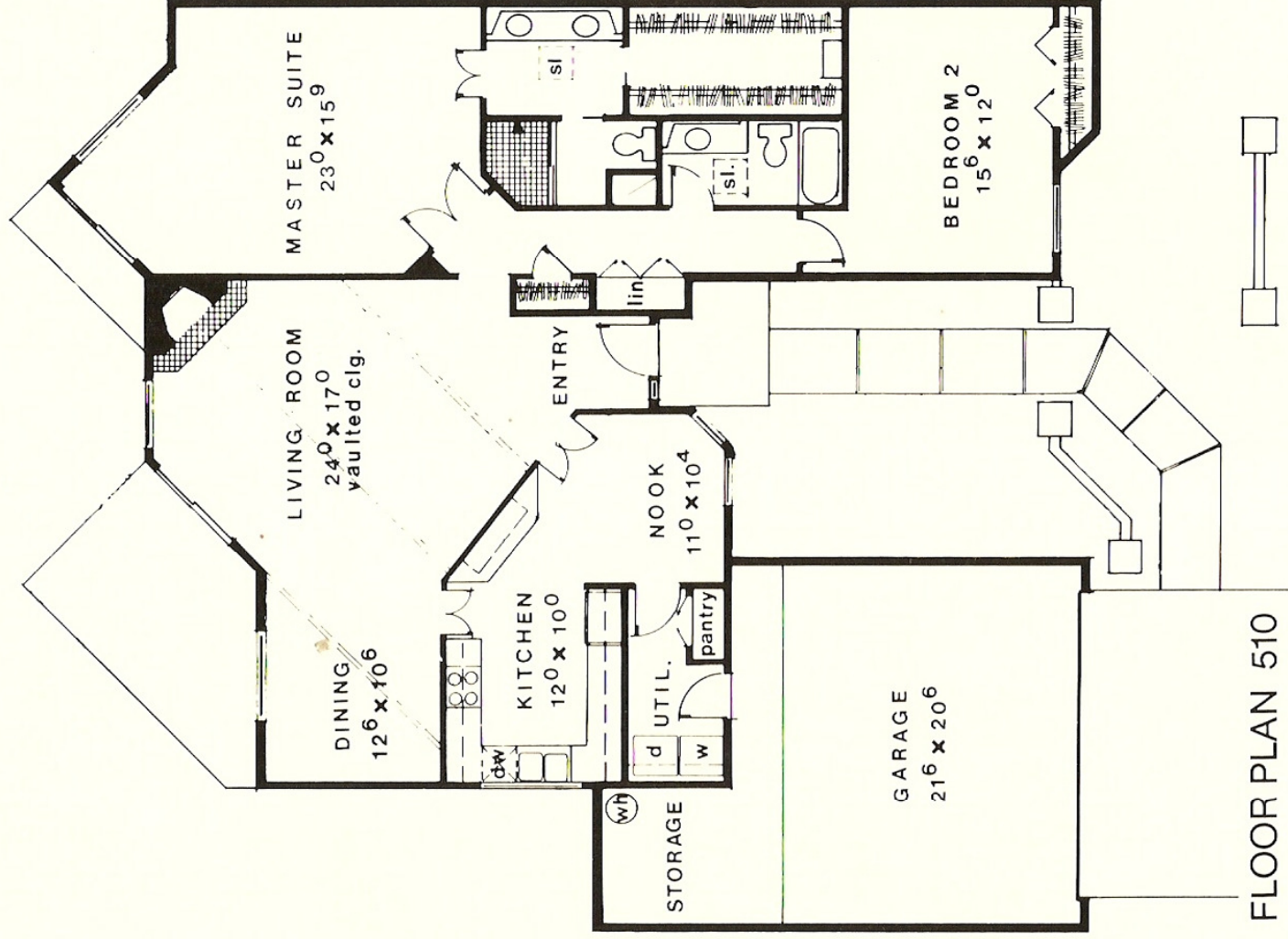


# La Miranda



Visitors approach La Miranda through a winding, landscaped courtyard. Inside, a splash of sunlight greets guests as it streams into the entryway through two arched, angled windows in the breakfast nook. More light flows into the living room through big arcadia doors framing the backyard.

Double-doors leading from two areas of the kitchen and nook let you make a truly grand entrance with your entrée. Two separate counter areas in the kitchen keep even the most complicated dinner parties organized.

A large dining room looks out across the trellis-covered patio, while the fireplace crackles quietly

in the corner of your huge living room. Above, the angled ceiling lifts to its lofty peak.

Your master bedroom suite opens through a set of double-doors. Two large windows bring a whole sky full of sunshine into a comfortable sitting area, which angles dramatically toward the yard and patio area.

And of course, you'll never stop appreciating such extras as the deep, walk-in closet and roomy vanity area in the master bath.

La Miranda means the "look" or the "view." We think that after one look, you'll agree — La Miranda is spectacular.