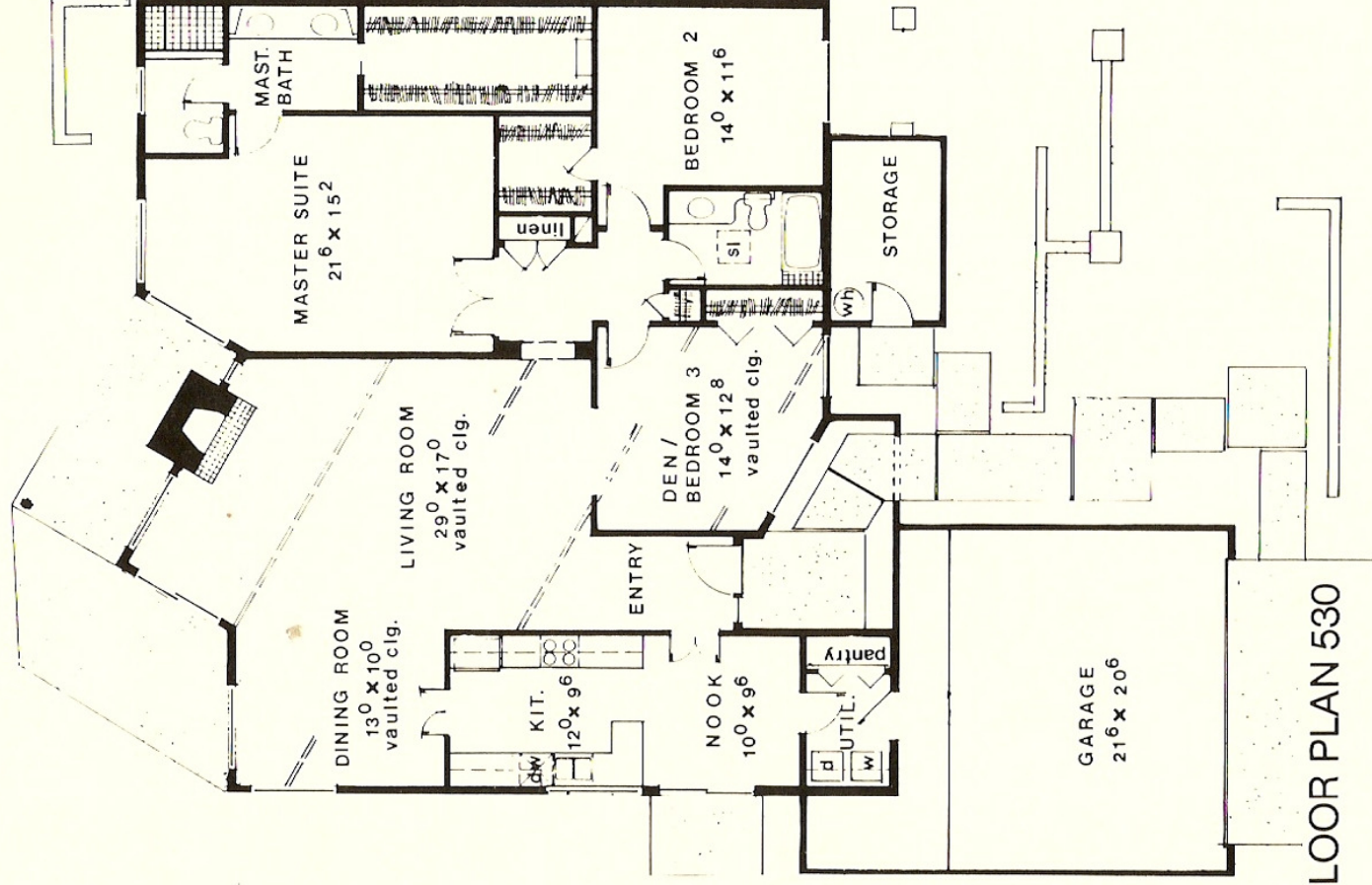


# La Torre Alta



## FLOOR PLAN 530

Enter La Torre Alta, the "high tower," through a long walkway cooled in the shade of generous landscaping. Step through the carved door into an enormous living room that's topped by a vaulted ceiling accented with bold beams of rich wood.

Immediately, you will know where La Torre Alta gets its name.

Towering ceilings. Beams that stretch all the way across the living room into the large dining room, where you can dine as you look out onto the backyard. Your kitchen wizardry takes place behind a set of double-doors, so curious "taste testers" can't get an early peek at the gourmet main course.

At the other end of the kitchen, through another set of doors, mornings can be enjoyed in the airy breakfast nook.

Your master bedroom suite is large, versatile and immensely comfortable. At last, you can choose furnishings with little worry about whether they'll "crowd" or overpower a room. Let your flair for designing run loose in this huge master suite. There's room enough for a quick set of warmup exercises before you leave for work. Or simply enjoy your morning paper in the large sitting area, as the warm sun brightens the room through two large windows. La Torre Alta includes a comfortable den that can also be used as a third bedroom when unexpected visitors arrive.