

**MARACAY HOMES**

*Horizons*

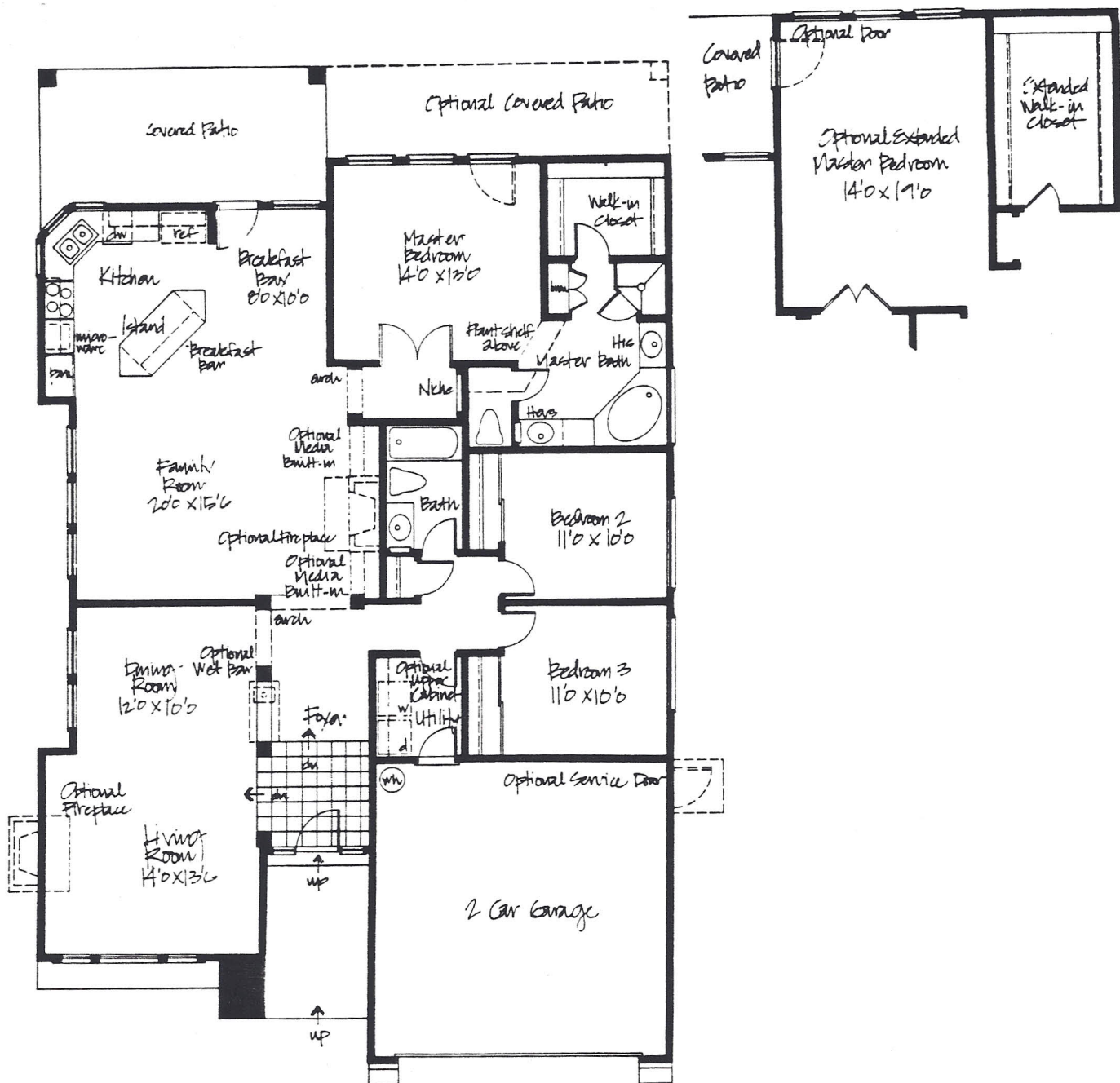
at

**Scottsdale Mountain**

**Plan 901**

THREE BEDROOMS, TWO BATHS, LIVING ROOM, DINING ROOM, FAMILY ROOM, OPTIONAL DEN/RETREAT, BREAKFAST BAR, 1,606 SQUARE FEET

Interior and exterior features, specifications, location and sizes may vary by plan and are subject to change without notice. All dimensions are approximate. Please consult your sales counselor for details on current amenities and features for this floorplan.



## MARACAY HOMES

*Horizons*

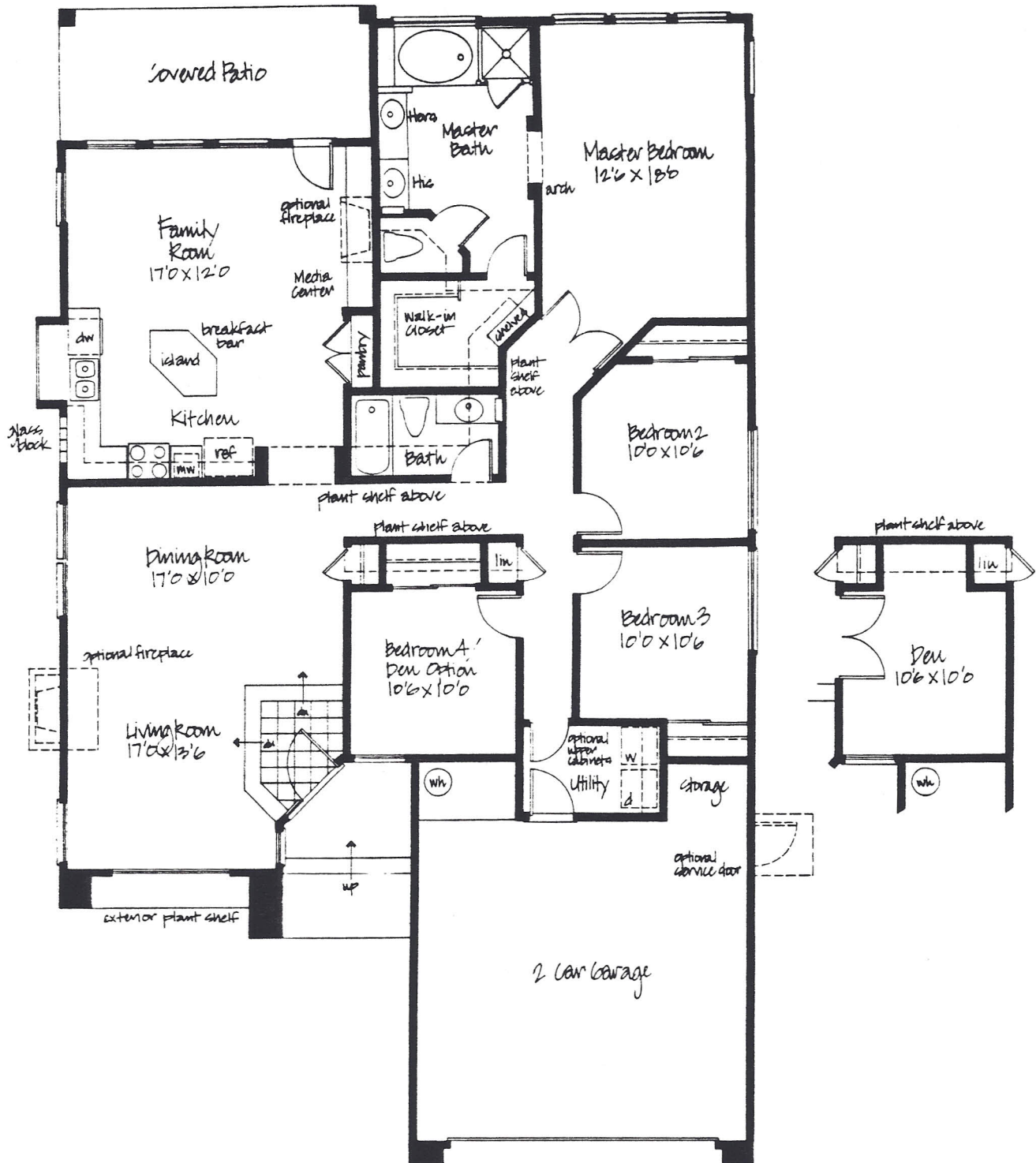
at

Scottsdale Mountain

### Plan 902

THREE BEDROOMS, TWO BATHS, LIVING ROOM, DINING ROOM, FAMILY ROOM, BREAKFAST BAY, BREAKFAST BAR, OPTIONAL EXTENDED MASTER BEDROOM, 1,856 SQUARE FEET

Interior and exterior features, specifications, location and sizes may vary by plan and are subject to change without notice. All dimensions are approximate. Please consult your sales counselor for details on current amenities and features for this floorplan.



**MARACAY HOMES**

*Horizons*

at

**Scottsdale Mountain**

**Plan 903**

FOUR BEDROOMS, TWO BATHS, LIVING ROOM, DINING ROOM, FAMILY ROOM, BREAKFAST BAR, OPTIONAL DEN, 2,000 SQUARE FEET

Interior and exterior features, specifications, location and sizes may vary by plan and are subject to change without notice. All dimensions are approximate. Please consult your sales counselor for details on current amenities and features for this floorplan.