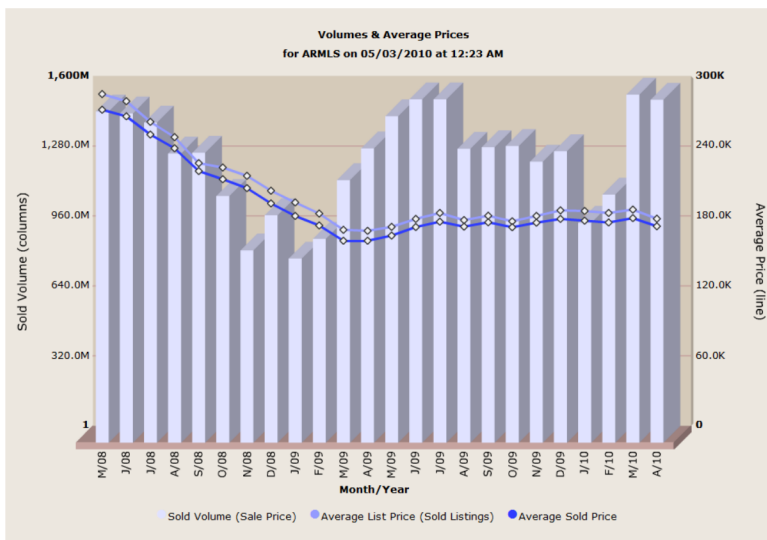


Search Parameters: all residential listings for ARMLS



	New Volume	Active Volume	Sold Volume (list price)	Sold Volume (sale price)	New Avg List	Active Avg List	Sold Avg List	Sold Avg Sale	SP/LP Ratio
Apr/2010	\$2,906,981,022	\$13,510,595,548	\$1,626,898,255	\$1,568,082,699	\$212,638	\$316,793	\$177,667	\$171,244	96.4
Mar/2010	\$3,167,403,499	\$13,630,195,406	\$1,656,967,466	\$1,591,927,882	\$215,352	\$314,378	\$185,467	\$178,187	96.1
Feb/2010	\$2,792,780,714	\$13,521,140,379	\$1,188,244,737	\$1,134,559,826	\$216,477	\$316,572	\$182,582	\$174,359	95.5
Jan/2010	\$3,058,761,889	\$13,250,126,575	\$1,053,626,315	\$1,005,869,935	\$231,391	\$318,757	\$184,232	\$175,912	95.5
Dec/2009	\$2,122,179,291	\$13,393,605,099	\$1,386,727,821	\$1,332,830,972	\$202,112	\$325,989	\$184,700	\$177,521	96.1
Nov/2009	\$2,546,332,056	\$13,462,880,400	\$1,327,166,008	\$1,284,892,557	\$232,754	\$332,910	\$179,954	\$174,222	96.8
Oct/2009	\$3,127,806,218	\$13,299,191,788	\$1,397,611,935	\$1,356,565,850	\$237,675	\$337,440	\$175,381	\$170,251	97.1
Sep/2009	\$2,811,063,058	\$13,201,847,625	\$1,395,402,712	\$1,351,292,352	\$224,777	\$340,367	\$180,284	\$174,585	96.8
Aug/2009	\$2,683,328,359	\$13,290,554,486	\$1,389,318,178	\$1,343,960,176	\$215,061	\$347,529	\$176,511	\$170,770	96.7
Jul/2009	\$2,790,570,524	\$13,736,672,235	\$1,637,369,330	\$1,569,573,747	\$218,013	\$356,047	\$182,518	\$174,999	95.9
Jun/2009	\$2,752,830,945	\$14,615,369,851	\$1,634,029,804	\$1,569,987,507	\$218,046	\$367,469	\$177,534	\$170,576	96.1
May/2009	\$2,563,593,880	\$15,883,299,321	\$1,561,601,848	\$1,492,712,799	\$234,203	\$373,320	\$170,685	\$163,155	95.6
Apr/2009	\$2,629,096,721	\$17,199,921,500	\$1,418,107,728	\$1,345,720,346	\$235,244	\$361,100	\$167,229	\$158,693	94.9
Mar/2009	\$3,334,695,626	\$18,325,788,175	\$1,271,728,009	\$1,200,221,156	\$232,821	\$351,311	\$168,151	\$158,717	94.4
Feb/2009	\$3,218,430,680	\$18,557,896,166	\$987,150,944	\$931,688,300	\$252,901	\$346,100	\$182,063	\$171,898	94.4
Jan/2009	\$3,899,192,398	\$18,635,562,054	\$895,797,255	\$841,604,778	\$282,284	\$336,030	\$191,573	\$180,022	94
Dec/2008	\$2,769,770,987	\$19,687,662,514	\$1,099,450,612	\$1,040,121,019	\$231,702	\$342,322	\$201,586	\$190,777	94.6
Nov/2008	\$3,223,748,054	\$20,101,316,213	\$924,702,903	\$879,471,947	\$258,810	\$350,191	\$214,299	\$203,817	95.1
Oct/2008	\$3,921,015,694	\$20,290,446,388	\$1,181,695,422	\$1,127,848,967	\$267,135	\$358,033	\$221,623	\$211,524	95.4
Sep/2008	\$3,851,194,452	\$20,260,817,758	\$1,367,370,668	\$1,325,660,381	\$269,408	\$365,639	\$225,341	\$218,503	97
Aug/2008	\$3,722,815,295	\$20,681,997,030	\$1,374,496,657	\$1,321,868,104	\$273,978	\$372,809	\$247,567	\$238,088	96.2
Jul/2008	\$3,769,042,284	\$21,556,468,827	\$1,527,306,718	\$1,463,652,070	\$278,631	\$384,456	\$260,677	\$249,812	95.8
Jun/2008	\$3,898,684,103	\$22,760,179,750	\$1,579,043,976	\$1,505,317,446	\$287,534	\$396,546	\$278,392	\$265,394	95.3
May/2008	\$4,281,310,559	\$23,965,959,085	\$1,589,624,497	\$1,514,895,183	\$327,768	\$404,666	\$284,471	\$271,097	95.3