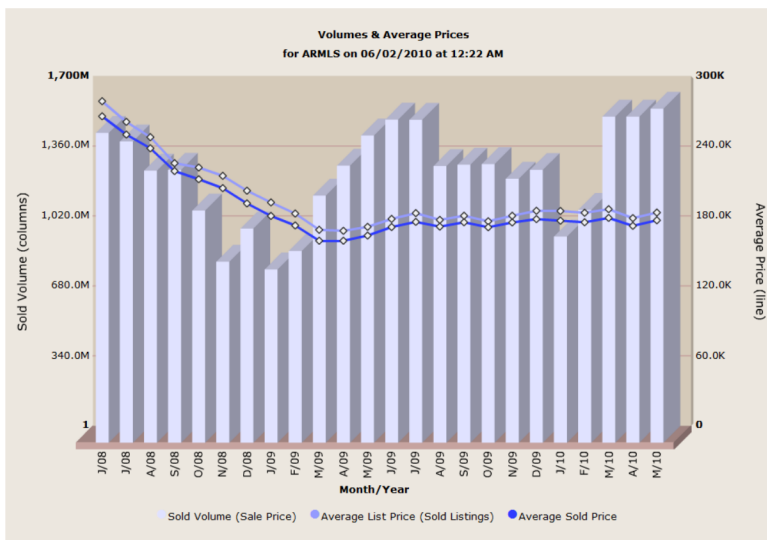


Search Parameters: all residential listings for ARMLS



	New Volume	Active Volume	Sold Volume (list price)	Sold Volume (sale price)	New Avg List	Active Avg List	Sold Avg List	Sold Avg Sale	SP/LP Ratio
May/2010	\$2,535,985,819	\$12,834,447,804	\$1,684,231,040	\$1,622,655,609	\$220,462	\$310,055	\$182,969	\$176,279	96.3
Apr/2010	\$2,934,707,156	\$13,299,409,118	\$1,645,587,389	\$1,584,387,419	\$208,490	\$313,096	\$178,171	\$171,544	96.3
Marr/2010	\$3,137,279,884	\$13,489,524,816	\$1,650,396,765	\$1,584,477,055	\$213,304	\$312,098	\$185,792	\$178,371	96
Feb/2010	\$2,775,136,262	\$13,432,526,774	\$1,183,518,237	\$1,130,880,191	\$215,093	\$314,638	\$182,754	\$174,653	95.6
Jan/2010	\$3,041,923,542	\$13,196,747,475	\$1,049,966,035	\$1,002,114,241	\$230,117	\$316,962	\$184,269	\$175,902	95.5
Dec/2009	\$2,113,901,154	\$13,362,296,532	\$1,378,834,831	\$1,325,108,232	\$201,323	\$324,453	\$184,434	\$177,248	96.1
Nov/2009	\$2,534,099,118	\$13,434,571,991	\$1,324,453,408	\$1,282,165,807	\$231,636	\$331,529	\$180,099	\$174,349	96.8
Oct/2009	\$3,118,900,309	\$13,285,644,864	\$1,394,821,285	\$1,353,695,750	\$236,998	\$336,353	\$175,405	\$170,254	97.1
Sep/2009	\$2,800,893,276	\$13,194,453,081	\$1,394,747,912	\$1,350,694,452	\$223,981	\$339,511	\$180,269	\$174,575	96.8
Aug/2009	\$2,681,700,086	\$13,279,541,385	\$1,389,168,278	\$1,343,806,276	\$214,931	\$346,769	\$176,536	\$170,793	96.7
Jul/2009	\$2,786,372,490	\$13,727,957,979	\$1,636,154,730	\$1,568,410,847	\$217,685	\$355,434	\$182,484	\$174,967	95.9
Jun/2009	\$2,750,580,713	\$14,607,342,972	\$1,633,547,804	\$1,569,583,057	\$217,867	\$366,991	\$177,540	\$170,588	96.1
May/2009	\$2,568,699,434	\$15,874,890,156	\$1,561,426,848	\$1,492,547,799	\$234,670	\$372,991	\$170,685	\$163,155	95.6
Apr/2009	\$2,627,520,568	\$17,183,694,137	\$1,418,107,728	\$1,345,715,346	\$235,103	\$360,683	\$167,229	\$158,692	94.9
Marr/2009	\$3,333,395,722	\$18,310,215,585	\$1,271,728,009	\$1,200,218,156	\$232,730	\$350,985	\$168,151	\$158,717	94.4
Feb/2009	\$3,217,113,990	\$18,543,000,355	\$987,150,944	\$931,688,300	\$252,798	\$345,816	\$182,063	\$171,898	94.4
Jan/2009	\$3,897,138,098	\$18,622,439,443	\$895,797,255	\$841,604,778	\$282,135	\$335,793	\$191,573	\$180,022	94
Dec/2008	\$2,768,407,193	\$19,675,761,298	\$1,099,450,612	\$1,040,133,519	\$231,588	\$342,115	\$201,586	\$190,780	94.6
Nov/2008	\$3,221,922,154	\$20,090,986,596	\$924,702,903	\$879,471,947	\$258,664	\$350,017	\$214,299	\$203,817	95.1
Oct/2008	\$3,919,293,668	\$20,281,675,196	\$1,181,695,422	\$1,127,848,967	\$267,018	\$357,878	\$221,623	\$211,524	95.4
Sep/2008	\$3,850,917,431	\$20,254,308,918	\$1,367,370,668	\$1,325,660,381	\$269,389	\$365,508	\$225,341	\$218,503	97
Aug/2008	\$3,722,510,195	\$20,675,396,960	\$1,374,496,657	\$1,321,868,104	\$273,955	\$372,684	\$247,567	\$238,088	96.2
Jul/2008	\$3,768,830,484	\$21,550,080,657	\$1,527,306,718	\$1,463,652,070	\$278,615	\$384,335	\$260,677	\$249,812	95.8
Jun/2008	\$3,897,674,603	\$22,754,592,880	\$1,579,043,976	\$1,505,317,446	\$287,460	\$396,442	\$278,392	\$265,394	95.3