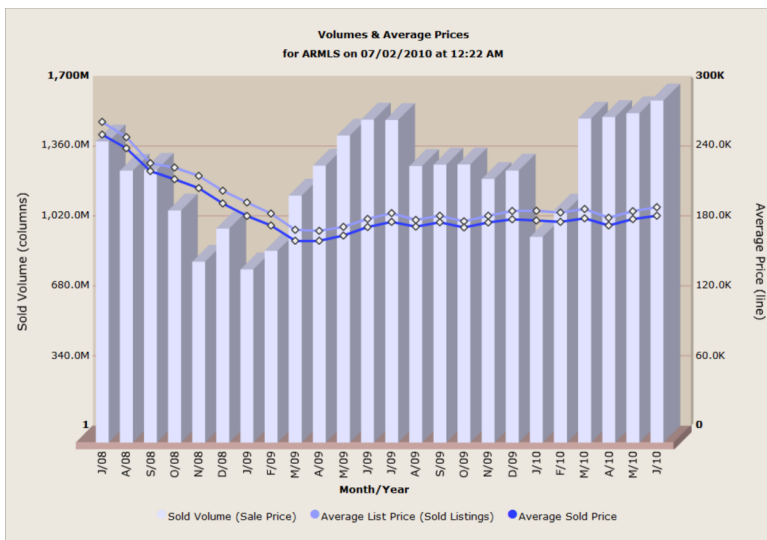


Search Parameters: all residential listings for ARMLS



	New Volume	Active Volume	Sold Volume (list price)	Sold Volume (sale price)	New Avg List	Active Avg List	Sold Avg List	Sold Avg Sale	SP/LP Ratio
Jun/2010	\$2,480,884,428	\$12,455,268,031	\$1,729,355,901	\$1,662,250,580	\$205,780	\$298,179	\$187,565	\$180,287	96.1
May/2010	\$2,571,021,091	\$12,644,102,083	\$1,662,232,542	\$1,600,655,283	\$217,514	\$306,977	\$184,058	\$177,240	96.3
Apr/2010	\$2,900,372,502	\$13,157,996,515	\$1,642,609,132	\$1,582,310,336	\$206,036	\$310,938	\$178,447	\$171,896	96.3
Marr/2010	\$3,113,010,282	\$13,393,124,767	\$1,645,338,465	\$1,574,794,669	\$211,668	\$310,435	\$185,998	\$178,023	95.7
Feb/2010	\$2,761,906,538	\$13,366,001,047	\$1,180,504,752	\$1,128,110,753	\$214,068	\$312,889	\$182,995	\$174,900	95.6
Jan/2010	\$3,029,870,279	\$13,151,212,400	\$1,047,434,470	\$999,577,077	\$229,205	\$315,422	\$184,407	\$176,012	95.4
Dec/2009	\$2,110,139,152	\$13,326,242,611	\$1,375,108,831	\$1,321,679,244	\$200,965	\$322,927	\$184,380	\$177,216	96.1
Nov/2009	\$2,528,600,323	\$13,399,840,928	\$1,323,555,608	\$1,281,199,683	\$231,133	\$330,110	\$180,222	\$174,455	96.8
Oct/2009	\$3,113,048,349	\$13,254,318,895	\$1,393,413,135	\$1,352,266,750	\$236,553	\$335,153	\$175,382	\$170,224	97.1
Sep/2009	\$2,800,427,064	\$13,167,188,362	\$1,394,502,298	\$1,350,347,768	\$223,926	\$338,522	\$180,284	\$174,576	96.8
Aug/2009	\$2,678,198,489	\$13,255,483,914	\$1,389,349,462	\$1,344,036,915	\$214,650	\$345,924	\$176,582	\$170,844	96.8
Jul/2009	\$2,784,356,504	\$13,704,684,626	\$1,635,647,747	\$1,567,904,364	\$217,527	\$354,657	\$182,468	\$174,950	95.9
Jun/2009	\$2,745,365,761	\$14,588,815,212	\$1,633,501,287	\$1,569,582,866	\$217,454	\$366,405	\$177,535	\$170,588	96.1
May/2009	\$2,566,904,934	\$15,858,086,901	\$1,560,875,948	\$1,491,996,099	\$234,506	\$372,526	\$170,662	\$163,130	95.6
Apr/2009	\$2,626,018,468	\$17,167,479,582	\$1,418,107,728	\$1,345,720,441	\$234,969	\$360,298	\$167,229	\$158,693	94.9
Marr/2009	\$3,331,564,454	\$18,295,189,198	\$1,271,635,509	\$1,200,123,156	\$232,602	\$350,670	\$168,161	\$158,725	94.4
Feb/2009	\$3,215,632,099	\$18,529,682,799	\$987,267,044	\$931,836,300	\$252,682	\$345,548	\$182,085	\$171,925	94.4
Jan/2009	\$3,895,359,310	\$18,610,682,937	\$895,797,255	\$841,604,778	\$282,006	\$335,563	\$191,573	\$180,022	94
Dec/2008	\$2,768,026,106	\$19,664,904,181	\$1,099,450,612	\$1,040,133,519	\$231,556	\$341,915	\$201,586	\$190,780	94.6
Nov/2008	\$3,221,385,652	\$20,080,587,565	\$924,702,903	\$879,471,947	\$258,621	\$349,823	\$214,299	\$203,817	95.1
Oct/2008	\$3,918,325,697	\$20,271,612,738	\$1,181,895,422	\$1,127,848,967	\$266,952	\$357,688	\$221,623	\$211,524	95.4
Sep/2008	\$3,850,436,537	\$20,244,908,155	\$1,367,370,668	\$1,325,660,381	\$269,355	\$365,332	\$225,341	\$218,503	97
Aug/2008	\$3,721,901,100	\$20,666,388,396	\$1,374,496,657	\$1,321,868,104	\$273,910	\$372,515	\$247,567	\$238,088	96.2
Jul/2008	\$3,768,031,984	\$21,541,609,488	\$1,527,306,718	\$1,463,652,070	\$278,556	\$384,177	\$260,677	\$249,812	95.8